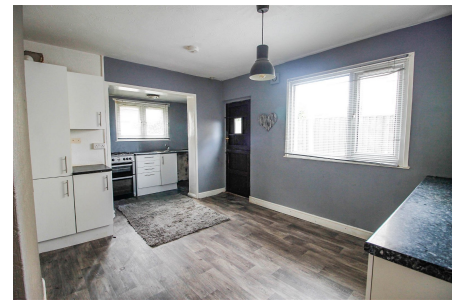


## Rhuddlan Road, Rhyl

Offers In Region Of £145,000

3 1 1

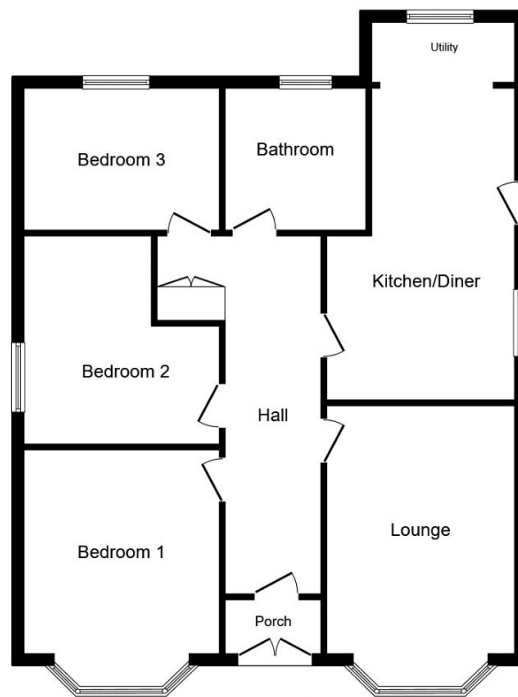


Situated in the popular area of South Rhyl is this traditional style three bedroom detached double fronted bungalow. Being within a short drive of Rhyl's main town centre, seafront and promenade. The property is well presented and spacious throughout, with lounge, kitchen/diner, ample off road parking with garage and gardens to front and rear. Internal viewing is highly recommended.

Directions: Proceed away from the Rhyl office over the Vale Road bridge continue onto Rhuddlan Road and the property can be seen on the right hand side by way of a For Sale board.

## Key Features

- Three bedroom
- Detached bungalow
- Traditional style
- Gardens to front and rear
- Council tax - D
- Double fronted
- Short drive to town centre
- Ample off street parking with garage
- EPC - D
- Date - 08/06/2023



**Floor Plan**

Total floor area 92.7 sq.m. (998 sq.ft.) approx

This floor plan is for illustration purposes only and may not be representative of the property. The position and size of doors, windows and other features are approximate. Unauthorized reproduction prohibited. © PropertyBOX